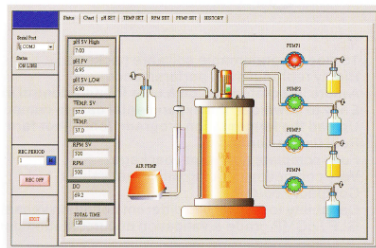


# Fermentation System

## Programmable



- 15 Step programmable software package
- Highly reproductivity performance
- A more integrated design & user friendly control interface
- Easy to download the experimental data to computer, and upload the fermentation program from either fermentor controller or computer or computer
- Real time recording
- Compact footprint
- Capability to control two different condition vessels simultaneously as an option
- GLP / cGMP grade & validation documentation package if required

Vessel working volume	3L	5L	7L	10L
Height /diameter	260/130mm	320/160mm	360/180mm	400/200mm
Aeration	Single orifice sparger			
Inlet gas flow meter	Adjustable 5L/min		Adjustable 10L/min	
Outlet gas	Stainless steel condenser			
Mechanical seal	Single mechanical seal			
Driver	Removable top driver motor			
Agitation speed	0,100 ~ 1.200 rpm			
Temperature controller	15 steps programmable controller			
Cooling	15 steps programmable PID controller			
Heating	Cooling coil on inner of vessel with control valve			
Temp probe	Bottom heating plate			
pH probe	Pt 100; 0~90°C; +/- 0.1°C			
pH probe	Autoclavable; pH 2~12 +/-0.01			
DO	Autoclavable, 0~100%			
Antifoam probe	316 stainless steel with insulated tube; on/off controller			
Easy load pump	4 ea of easy load pump head; Fifth pump as option			
	Pumps can be assigned and adjusted to more than five			
	Different functions via the keypad			
Communication port	15 steps programmable feeding application			
Other accessories	RS 485			
	a) 250ml media bottle x 4ea			
	b) 500ml media bottle x 1ea			
	c) 1.000ml media bottle x 1ea			
	d) 16 silicon tube (25ft/pk) x 2ea			
	e) 2 ports of stainless steel stopper x 3ea			
	f) stainless steel stopper x 2ea			
g) stainless steel feeding tube x 10ea				

[www.uniequip.com](http://www.uniequip.com)